

# Filters and Components with Inductance Cancellation

Timothy C. Neugebauer Joshua W. Phinney David J. Perreault  
 Laboratory for Electromagnetic and Electronic Systems  
 Massachusetts Institute of Technology  
 Cambridge, MA 02139 USA

**Abstract** --- Electrical filters are important for attenuating electrical ripple, eliminating electromagnetic interference (EMI) and susceptibility, improving power quality, and minimizing electromagnetic signature. Capacitors are critical elements in such filters, and filter performance is strongly influenced by the capacitor parasitics. This paper introduces a new design technique that overcomes the capacitor parasitic inductance that limits filter performance at high frequencies. Coupled magnetic windings are employed to effectively cancel the parasitic inductance of capacitors, and to add inductance in filter branches where it is desired. The underlying basis of the new technique is treated in detail, and its application to the design of both discrete filters and integrated LC filter components is described. Numerous experimental results demonstrating the high performance of the approach in both discrete filters and integrated filter elements are provided.

**Keywords** --- capacitor, equivalent series inductance, integrated filter, integrated passive component, EMI filter, inductance cancellation

## I. INTRODUCTION

Electrical filters are designed to prevent unwanted frequency components from propagating from the filter input port to the filter output port, while passing desirable components. In power applications, filters are important for attenuating electrical ripple, eliminating electromagnetic interference (EMI) and susceptibility, improving power quality, and minimizing electromagnetic signature. Such filters typically employ capacitors as shunt elements, and may include inductors as series elements, as illustrated in Fig. 1. The attenuation of a filter stage is determined by the amount of impedance mismatch between the series and shunt paths. For a low-pass filter, minimizing shunt-path impedance and maximizing series-path impedance at high frequencies is an important design goal. Design methods for such filters are described in [1,2], for example.

One critical aspect of such filters is the filter capacitor parasitics. Fig. 2 shows a first-order model for a filter capacitor [3], including the equivalent series resistance (ESR),  $R_{ESR}$ , and equivalent series inductance (ESL),  $L_{ESL}$ , of the capacitor. Fig. 3 illustrates the impedance

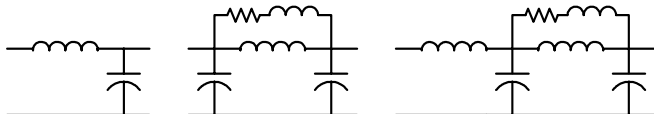


Fig. 1. Some common low-pass filter structures for power applications.

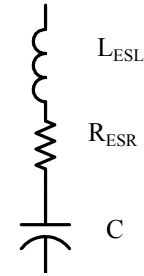


Fig. 2. A model for a real capacitor including equivalent series inductance (ESL) and equivalent series resistance (ESR).

characteristic of a typical capacitor across frequency. At high frequencies, the capacitor shunt impedance is dominated by the ESL. For example, a typical aluminum electrolytic capacitor may appear inductive (impedance rising with frequency) at frequencies above 50-100 kHz, limiting its ability to shunt ripple at high frequencies. Similarly, large-valued film capacitors typically become inductive in the range of 100 kHz – 1 MHz. The traditional approach for overcoming filter capacitor limitations is to parallel capacitors of different types (to cover different frequency ranges) and/or to increase the order of the filter used (e.g., by adding series filter elements such as inductors). Both of these approaches can add considerable size and cost to the filter.

This paper introduces a new design technique that overcomes the capacitor parasitic inductance that limits filter performance at high frequencies. This new technique is based on the application of coupled magnetic windings to effectively cancel the parasitic inductance of capacitors, while introducing inductance in filter branches where it is desired. After treating the underlying basis of the new technique, we address its application to the design of both discrete filters (that is, filters built with discrete components) and novel integrated LC filter components. We also provide experimental results demonstrating the viability and high

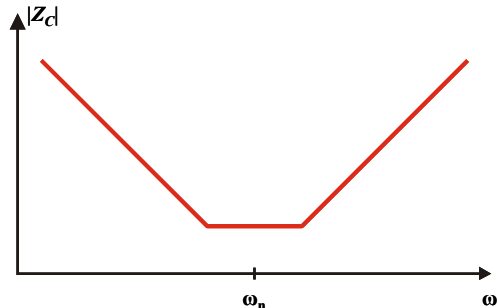


Fig. 3. Illustration of capacitor impedance magnitude vs. frequency. High-frequency impedance is dominated by the capacitor ESL.

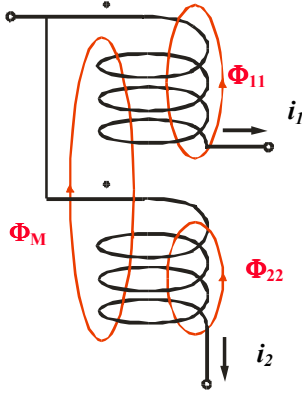


Fig. 4. An end-tapped connection of coupled magnetic windings.

performance of the approach for both discrete filters and integrated filter elements.

The paper is organized as follows: Section II introduces the use of coupled magnetic windings to overcome capacitor parasitic inductance. Practical implementation of this technique in both discrete filters and integrated filter components is explored in Section III. Section IV presents experimental results demonstrating the new technique, and the final section concludes the paper.

## II. INDUCTANCE CANCELLATION

Here we propose how magnetically-coupled windings can be used to cancel the effects of capacitor parasitics. Fig. 4 illustrates one possible connection of coupled magnetic windings, which we hereafter refer to as an “end-tapped” connection. In this case, each winding links flux with itself and mutually with the other winding. An electromagnetic analysis of this system leads to an inductance matrix description:

$$\begin{bmatrix} \lambda_1 \\ \lambda_2 \end{bmatrix} = \begin{bmatrix} \frac{N_1^2}{\mathfrak{R}_{11}} + \frac{N_1^2}{\mathfrak{R}_M} & \frac{N_1 N_2}{\mathfrak{R}_M} \\ \frac{N_1 N_2}{\mathfrak{R}_M} & \frac{N_2^2}{\mathfrak{R}_{22}} + \frac{N_2^2}{\mathfrak{R}_M} \end{bmatrix} \begin{bmatrix} i_1 \\ i_2 \end{bmatrix} = \begin{bmatrix} L_{11} & L_M \\ L_M & L_{22} \end{bmatrix} \begin{bmatrix} i_1 \\ i_2 \end{bmatrix} \quad (1)$$

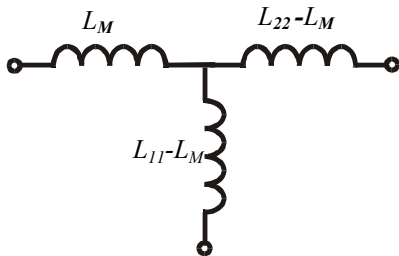


Fig. 5. An equivalent circuit model for end-tapped coupled magnetic windings.

where the flux linkages  $\lambda_1$  and  $\lambda_2$  are the time integrals of the individual coil voltages, and  $i_1$  and  $i_2$  are the individual coil currents. The self-inductances  $L_{11}$  and  $L_{22}$  and mutual inductance  $L_M$  are functions of the numbers of coil turns and the reluctances  $\mathfrak{R}_{11}$ ,  $\mathfrak{R}_{22}$ , and  $\mathfrak{R}_M$  of the self and mutual magnetic flux paths. In cases where no magnetic material is present, the behavior of the coupled windings is determined principally by the geometry of the windings. Conservation of energy considerations require that the mutual coupling between the windings be less than or equal to the geometric mean of the self-inductances. That is,

$$L_M \leq \sqrt{L_{11} L_{22}}. \quad (2)$$

Thus, the inductance matrix of (1) is necessarily positive semidefinite. Note that while the constraint (2) limits  $L_M$  to be less than or equal to the geometric mean of  $L_{11}$  and  $L_{22}$ , it may still be larger than *one* of the two inductances. For example, with proper winding of the coils one may have

$$L_{11} < L_M < \sqrt{L_{11} L_{22}} < L_{22} \quad (3)$$

Fig. 5 shows one possible equivalent circuit model for the coupled inductor windings based on the inductance matrix of (1). This model is referred to as the “T” model of the coupled windings. With the ordering of self and mutual inductances of (3), the inductance of one leg of the T model – the vertical leg in Fig. 5 – is clearly negative! It is this “negative inductance” that will be utilized to overcome the high-frequency limitations of filter capacitors.

The negative inductance effect arises from electromagnetic induction between the coupled windings. This is readily seen in the physically-based circuit model of the coupled windings shown in Fig. 6. (With appropriate parameter values, the circuit models of Figs. 5 and 6 have identical terminal characteristics, and each captures the behavior of the system (1).) We stress that the negative inductance in the T model does not violate any physical laws. Only one leg of the T model has a negative inductance. The total inductance seen across any winding is – as expected – the positive-valued self inductance of the winding.

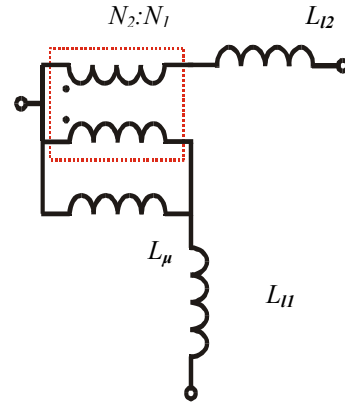


Fig. 6. A physically-based circuit model of the coupled magnetic windings.

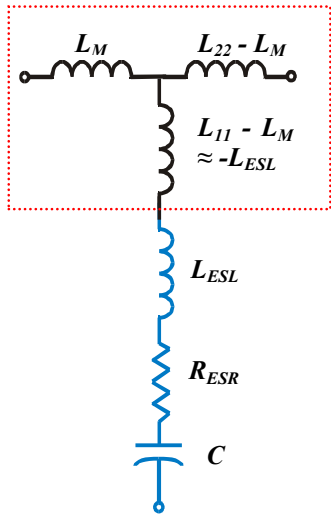


Fig. 7. Application of coupled magnetic windings to cancel the series inductance of a capacitor. Capacitor ESR and ESL are shown explicitly, along with the equivalent T model of the magnetic windings.

Fig. 7 shows the application of the coupled magnetic windings to a capacitor whose equivalent series inductance (ESL) is to be cancelled. The coupled windings are modeled with the T network of Fig. 5, while the capacitor is shown as an ideal capacitor  $C$  in series with parasitic resistance  $R_{ESR}$  and parasitic inductance  $L_{ESL}$ . (We also lump any interconnect parasitics into these elements.) When  $L_{11} - L_M$  is chosen to be negative and close in magnitude to  $L_{ESL}$ , a net shunt path inductance  $\Delta L = L_{11} - L_M + L_{ESL} \approx 0$  results. The combined network is very advantageous as a filter. A near-zero shunt path impedance (limited only by ESR) is maintained out to much higher frequencies than is possible with the capacitor alone. Furthermore, as  $L_{22}$  is much greater than  $L_M$ , the series-path inductance  $L_{22} - L_M$  serves to increase the order of the filter network, further improving filter performance.

It should be appreciated that other magnetic winding structures can also be used to realize inductance cancellation. Another three-terminal coupled magnetic structure that can be used is shown in Fig. 8. This implementation is advantageous in that it can be formed from a single winding tapped at an appropriate point. An electromagnetic analysis of the system of Fig. 8 results in an inductance matrix:

$$\begin{bmatrix} \lambda_1 \\ \lambda_2 \end{bmatrix} = \begin{bmatrix} \frac{N_1^2}{\mathfrak{R}_{11}} + \frac{N_1^2}{\mathfrak{R}_M} & \frac{-N_1 N_2}{\mathfrak{R}_M} \\ \frac{-N_1 N_2}{\mathfrak{R}_M} & \frac{N_2^2}{\mathfrak{R}_{22}} + \frac{N_2^2}{\mathfrak{R}_M} \end{bmatrix} \begin{bmatrix} i_1 \\ i_2 \end{bmatrix} = \begin{bmatrix} L_{11} & -L_M \\ -L_M & L_{22} \end{bmatrix} \begin{bmatrix} i_1 \\ i_2 \end{bmatrix} \quad (4)$$

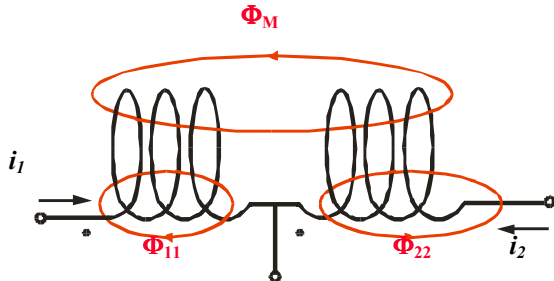


Fig. 8. A center-tapped coupled magnetic winding configuration.

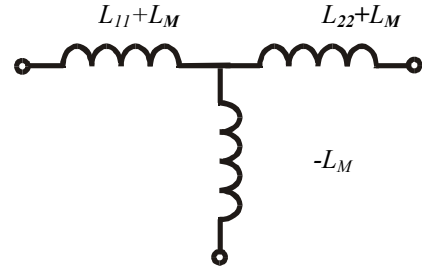


Fig. 9. An equivalent circuit model for the center-tapped coupled magnetic windings.

where the self inductances  $L_{11}$  and  $L_{22}$  and mutual inductance  $L_M$  are again functions of the numbers of coil turns  $N_1$ ,  $N_2$  and the reluctances of the respective magnetic flux paths. The magnitude of the mutual inductance is again limited by the constraint (2), though without the ordering imposed in (3).

The terminal characteristics of the system of Fig. 8 can be modeled with the “T model” of Fig. 9. Again, one branch of the T model has a negative inductance (in this case equal in magnitude to the mutual inductance  $L_M$ ). When  $L_M$  is chosen to be close in magnitude to the equivalent series inductance  $L_{ESL}$  of an electrical circuit path (e.g., through a capacitor) connected to the bottom terminal, a reduced net effective inductance  $\Delta L = -L_M + L_{ESL} \approx 0$  results in the capacitor’s shunt path.

As described above, coupled magnetic windings are used to cancel inductance in the capacitor branch path (e.g., due to capacitor and interconnect parasitics) and provide filter inductance in a second branch path. In a low-pass filter, this corresponds to a cancellation of the filter shunt-path inductance, and an addition of series path inductance. (The final branch path necessarily has an inductance greater than or equal to the magnitude of the “negative” inductance that is introduced in the capacitor path.) We point out that the use of coupled magnetics in filters is not in itself new. In fact, use of coupled magnetic windings in filters dates at least as far back as the 1920’s [4], and has continued up to the present time in many forms [5-10] (see [5] for a good review of such usage). The approach described here differs from these existing methods in that the coupling of the windings is utilized to cancel the effects of parasitic inductance in the capacitor and interconnects, permitting dramatic improvements in filtering performance to be achieved.

### III. IMPLEMENTATION

In this section we consider application of this inductance cancellation technique in the design of both discrete filters and integrated filter components. One important design consideration is that of repeatability: if tuning of individual units is to be avoided, the inductances of both the capacitor and the magnetic windings must be highly repeatable<sup>1</sup>. Fortunately, unlike capacitance or ESR values, capacitor ESL is typically repeatable to within a few percent. For example,

<sup>1</sup> Systems incorporating active self tuning [11-13] (e.g., via controllable magnetics [14-17]) are also possible. We defer consideration of this approach to a future report.

the histograms of Figs. 10(a) and 10(b) show the distribution of ESL and ESR for a type of electrolytic capacitor that is widely used in filters. The ESR varies over a wide range from 14.2 m $\Omega$  to 60.9m $\Omega$  (outlier not shown). The ESL, by contrast, varies only from 17.29 nH to 18.13 nH (with a standard deviation of 44.6 pH), representing a maximum variation in ESL of only  $\pm 2.4\%$  across units. This makes sense: the absence of magnetic materials means that the inductance of the structure depends primarily on geometry, while capacitance and resistance depend on material and interface properties. One may conclude that inasmuch as appropriate coupled-magnetic structures can be created, the parasitic inductance can be repeatably cancelled to within a few percent of its original value.

The capacitor inductance to be cancelled in a practical design is typically quite small (e.g., on the order of tens of nanohenries). Coupled magnetic windings appropriate to the cancellation technique must thus be able to accurately generate a negative effective shunt inductance in this range under all operating conditions. One approach for achieving this is to use coupled windings without magnetic materials. Such “air-core” magnetics are appropriate given the small inductances needed and the desire for repeatability and insensitivity to operating conditions.

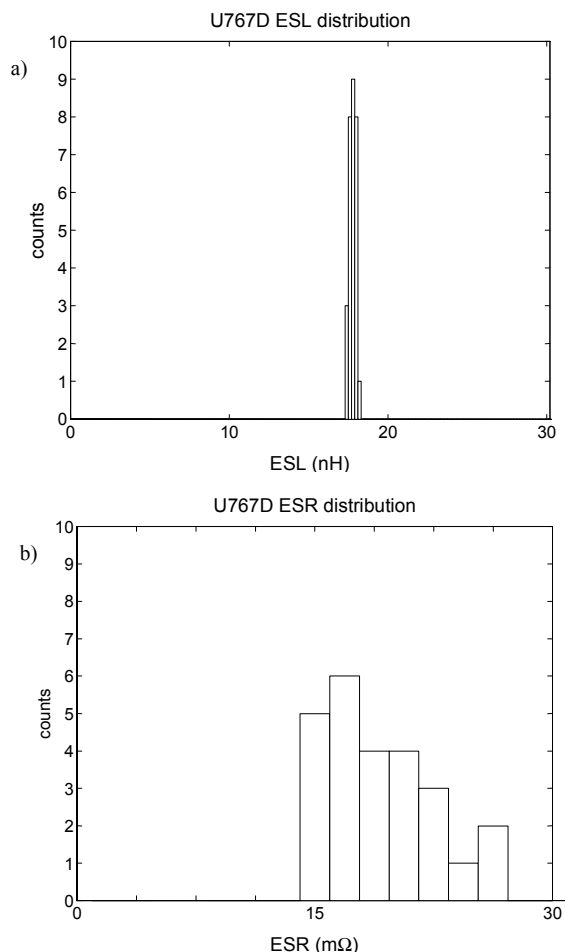


Fig. 10. (a) ESL and (b) ESR histograms for 30 United Chemi-Con U767D 2200  $\mu$ F 35 V capacitors. ESL Range: 17.29 to 18.13 nH,  $\sigma = 44.6$  pH. ESR Range: 14.2 m $\Omega$  to 60.9 m $\Omega$  (outlier not shown).

Two approaches for employing the proposed inductance cancellation technique are considered in this paper. We first address the use of inductance cancellation methods in the design of filter circuits built with discrete components (e.g., capacitors and inductors) using conventional manufacturing techniques. We then explore the integration of cancellation windings with a capacitor to form an *integrated filter element* – a three terminal device providing both a shunt capacitance (with extremely low shunt inductance) and a series inductance.

#### A. Discrete Filters

An immediate application of the proposed technology is in the design of discrete filters – that is, filters built with available or easily manufactured components using conventional fabrication techniques. In this approach, a coupled winding circuit is connected to a discrete capacitor to provide a very low-inductance path through the capacitor along with a second high-inductance path. The coupled winding circuit should have repeatable inductance parameters (that are properly matched to the capacitor), and should have minimal size and cost impact on the filter.

One simple implementation method is to print the coupled windings as part of the filter printed circuit board (PCB). Printing the magnetic windings on the PCB results in extremely repeatable magnetic structures and interconnects. Furthermore, it represents essentially no extra cost or volume in the design if the PCB space underneath the filter capacitor can be used for the windings.

We have found air-core PCB windings to be highly effective for the proposed inductance cancellation technique. As will be demonstrated in Section IV, practical printed PCB windings can be implemented using either end-tapped (Fig. 4) or center-tapped (Fig. 8) winding configurations, and can be placed either partially or entirely underneath the capacitor on the PCB. A two-layer circuit board is typically sufficient to implement the windings with the required interconnects accessed at the outside of the spiral windings. The coupled winding circuits demonstrated in this paper were designed using a widely-available inductance calculation tool [18] and refined experimentally.

#### B. Integrated Filter Elements

In addition to their application in discrete filters, inductance cancellation techniques have application to new filter *components*. Here we introduce the integration of coupled magnetic windings (providing inductance-cancellation) with a capacitor to form an *integrated filter element* – a single three-terminal device providing both a shunt capacitance (with extremely low inductance) and a series inductance. To do this, one can wind inductance-cancellation magnetics on, within, or as part of the capacitor itself. This approach, illustrated in Fig. 11, minimizes the volume of the whole structure, as the same volume is used for the capacitive and magnetic energy storage. For example, starting with a wound (tubular) capacitor, one could wind the coupled magnetics directly on top of the capacitor winding. The magnetic windings can also be implemented through extension or patterning of the capacitor foil or metallization itself. An integrated filter element utilizing inductance

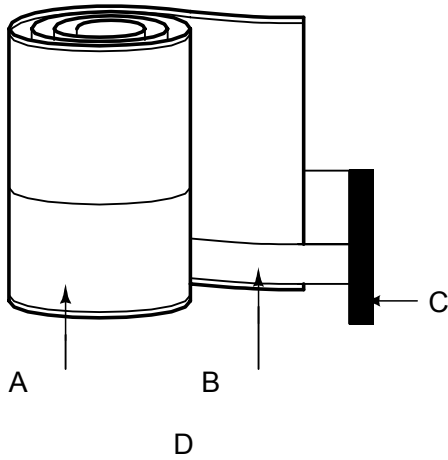


Fig. 11 Integrated filter element D is constructed by adding magnetically-coupled windings A and B over or as part of the basic capacitor structure. The integrated filter element is then a three-terminal device, with the connection of the two magnetic windings brought out as terminal C.

cancellation may be expected to have far better filtering performance than a capacitor of similar size.

We note that components incorporating both capacitive and inductive coupling have a long history in power applications [19-25] and continue to be an important topic of research (e.g., [26-29]). However, the aims and resulting characteristics of such prior art integrated elements are quite different than those described here. The approach described here is different in that magnetically-coupled windings are utilized to nullify the effects of the parasitic inductance in the capacitive path. This permits dramatic improvements in filtering performance to be achieved as compared to conventional components with relatively modest changes in manufacturing methods.

As with discrete filters, both end-tapped and center-tapped coupled-winding configurations are possible. (Note that in some integrated implementations, flux associated with current flow in the capacitive element may link the cancellation windings. This changes the details of the magnetic analysis – and may be used to advantage – but the underlying principles remain the same.) Consider an integrated component having a wound structure, as suggested by Fig. 11. In an end-tapped configuration, the magnetic windings comprise two conductors co-wound and electrically connected at one end (one terminal of the three terminal device.) The other end of one conductor is a second terminal of the device. The other end of the second conductor is connected to one plate of the capacitor. (The magnetic winding may be formed as a direct

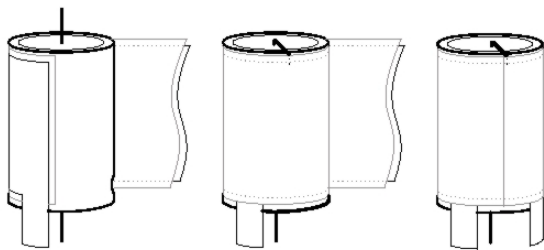


Fig. 12. One construction method for an integrated filter element with a center-tapped winding.

continuation of the capacitor winding in this case.) The other plate of the capacitor is connected to the third terminal.

In a center-tapped magnetic winding configuration, the coupled magnetic windings may be formed as a single conductor wound concentrically with the capacitor windings. The magnetic winding is tapped (connected to one plate of the capacitor) at a specified point in the winding. The other plate of the capacitor and the two ends of the magnetic winding form the three terminals of the device. Fig. 12 illustrates one possible method for forming the cancellation winding over the capacitor structure and interconnecting it to one capacitor plate.

#### IV. EXPERIMENTAL RESULTS

In this section we demonstrate the viability and high performance of the proposed inductance cancellation technology. We validate the approach for both discrete filters and integrated filter elements across a variety of capacitor sizes and types, and with both end-tapped and center-tapped winding configurations. We also demonstrate the large performance advantage of a prototype integrated filter element in a power converter application.

##### A. Evaluation Method

To evaluate the effectiveness of the inductance cancellation method, the test setup of Fig. 13 is used. The device under test (DUT) is either a capacitor, a capacitor plus PCB cancellation windings, or an integrated filter element. The DUT is driven from the 50  $\Omega$  output of the network analyzer. As the driving point impedance of the DUT is always far less than the output impedance of the network analyzer, the drive essentially appears as a current source. The voltage response is measured at the 50  $\Omega$  input of the network analyzer. The input impedance of the network analyzer is much greater than the impedance associated with the series output inductance of the DUT for the frequencies under consideration. Accordingly, this test effectively measures the shunt impedance of the DUT relative to the 50  $\Omega$  input impedance of the network analyzer. Thus, this test focuses on filtering improvements associated with the shunt-path inductance cancellation, while suppressing improvements available through the introduction of series path inductance. In practical application of a filter, one could take advantage of the series inductance provided by the cancellation windings to further improve attenuation performance.

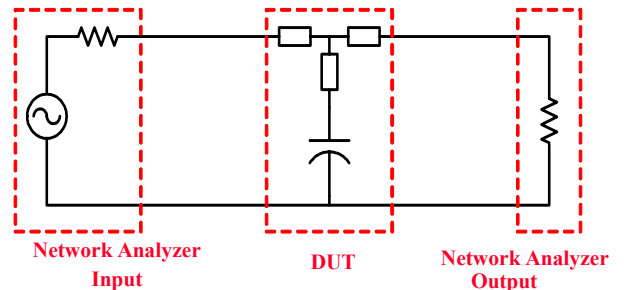


Fig. 13. An experimental setup for evaluating filters and components incorporating an Agilent 4395A network analyzer.



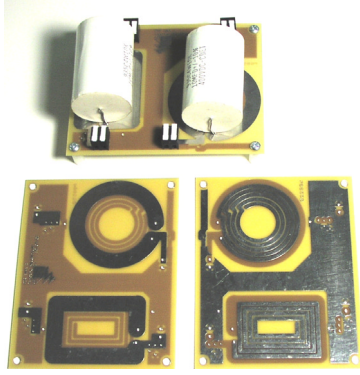


Fig. 14. Discrete filters using Cornell Dubilier 935C4W10K capacitors with end-tapped cancellation windings printed in the PCB. The board at the top has both capacitors mounted. The board in the lower left shows the top (component) side of the board, while the board in the lower right shows the bottom side of the board.

### B. End-Tapped Discrete Filter

Fig. 14 shows a discrete-filter implementation of the inductance cancellation technique for a large film capacitor (Cornell-Dubilier 935C4W10K, 10  $\mu$ F, 400 V). The coupled magnetic windings are printed in the PCB with a rectangular and circular coil version on each board. The printed windings are placed in an end-tapped configuration, with the winding connected to the capacitor made from a single turn on the top side of the 0.031" thick board. The second winding is placed on the bottom side of the board and is tapped at a point to maximize inductance cancellation in the system (approximately 2.5 turns are used, placing the output at the other end of the capacitor.) Current return for both the capacitor and filter output current is on a bottom-side ground plane adjacent to the capacitor. Note that the printed windings fit in the board space underneath the capacitor.

Fig. 15 shows comparative experimental results using the test arrangement of Fig. 13 for both a capacitor alone and a capacitor plus cancellation windings. The results are presented for frequencies up to 2 MHz, at 10 dB per division. The capacitor alone is self-resonant at a frequency of about 150 kHz, and acts as an inductor at higher frequencies. With cancellation windings, the effective shunt impedance of the



Fig. 15. Performance comparison between a 935C4W10K film capacitor and the inductance cancellation filter of Fig. 14.

filter drops to the value of the ESR and remains there to frequencies higher than 1 MHz. At approximately 1.25 MHz the capacitor itself has a secondary resonance, above which its effective ESL and ESR change by several percent. (The secondary resonance is not easily observed in the presented magnitude plot for the capacitor alone because it is overwhelmed by the primary ESL impedance. We have observed such secondary resonances in several large-valued film capacitors.) Despite second-order effects, the experimental results demonstrate that the inductance cancellation technique provides a large reduction in effective shunt-path inductance, resulting in a factor of 10 improvement (20 dB) in filtering performance out to very high frequencies. This dramatic improvement is achieved at no change in size or cost, since the cancellation windings fit in the board space beneath the capacitor.

### C. Center-Tapped Discrete Filter

A discrete filter implementation based on an X-type (safety) capacitor (Beyschlag Centrallab 2222 338 24 224, 0.22  $\mu$ F, 275 Vac) was also evaluated. Such capacitors are widely used in EMI filters for line applications. Inductance cancellation windings were again formed in the printed circuit board, this time using a center-tapped winding configuration. While not critical to the application, a pair of center-tapped coupled windings was used (one each for the positive and negative terminals of the capacitor) in order to maintain symmetry for common-mode signals. (We have also built a similar circuit utilizing a single coupled winding, with similar results.) In the case considered here, the coupled windings for each terminal comprised a single turn on the top layer of the board and a single turn on the bottom layer of the board.

Fig. 16 shows comparative experimental results using the test setup of Fig. 13 for the X capacitor with and without the printed cancellation windings. The conducted EMI frequency range up to 30 MHz is considered, with results plotted at 10 dB per division. The capacitor alone has an ESR of approximately 45 m $\Omega$  and an ESL of approximately 10 nH, resulting in a self resonant frequency in the vicinity of 3 MHz. Addition of the cancellation windings results in dramatic improvement in filtering performance at frequencies above 5 MHz (as much as 26 dB). Careful impedance measurements suggest an equivalent T model with input and output branch

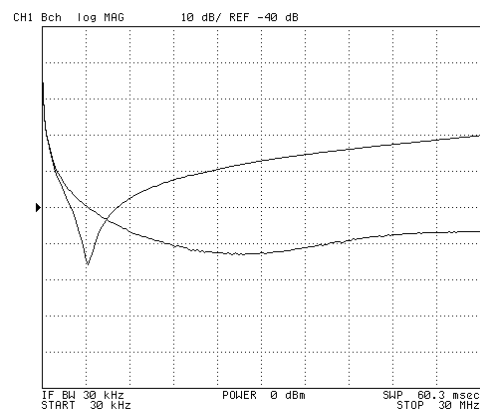


Fig. 16. Comparison of a BC 2222 338 24 224 X-capacitor to a corresponding discrete filter with center-tapped cancellation windings.

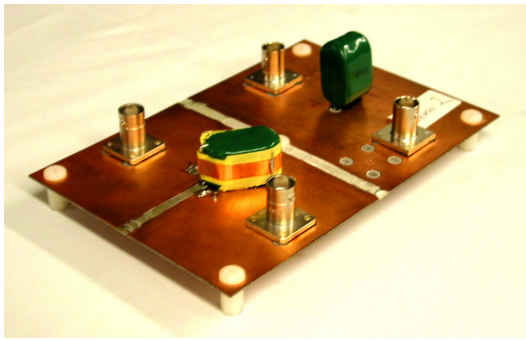


Fig. 17. A prototype integrated filter element based on a Rubycon MMW 106K2A film capacitor and center-tapped cancellation winding. The test board, including a capacitor only setup, is also shown.

inductances of approximately 17.5 nH each and a total shunt-branch inductance of approximately 1.2 nH, corresponding to an 88% reduction in effective capacitor-path inductance. The results confirm the dramatic filtering improvements possible with this technique.

#### D. Integrated Filter Element (Film)

We have also constructed prototype integrated filter elements by winding cancellation windings on the bodies of existing capacitors. Fig. 17 shows a prototype integrated filter element built with a center-tapped winding configuration using the construction method of Fig. 12. (The board also has a capacitor without cancellation windings.) The prototype filter element was constructed using a Rubycon MMW 106K2A film capacitor (10  $\mu$ F, 100 V). The tapped cancellation winding was wound on the center of the capacitor body with 0.25" wide 1 mil thick copper tape, using 1 mil thick mylar tape for insulation. A 330° winding was placed on the capacitor body and tapped, followed by a continued 225° winding. The prototype filter element was mounted on a two-sided pc board with the top side split between the filter input and output nodes, and a full-width ground plane on the bottom side of the board. (In the capacitor only case, the input and output nodes are the same.)

Test results using the experimental setup of Fig. 13 are shown in Fig. 18. The capacitor alone exhibits its primary self resonance at approximately 600 kHz, with a second resonance in the vicinity of 3 MHz. (Again, this is characteristic of some

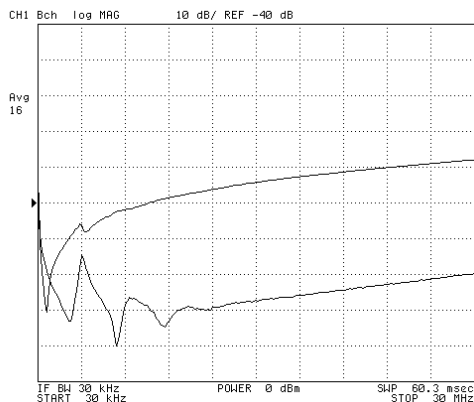


Fig. 18. Comparison of a Rubycon MMW 106K2A film capacitor to the prototype integrated filter element of Fig. 17.

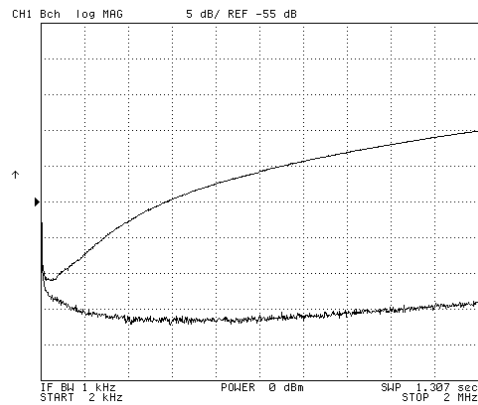


Fig. 19 Comparison of a United Chemi-con U767D, 2200  $\mu$ F electrolytic capacitor to the a corresponding prototype integrated filter element.

kinds of high-valued film capacitors.) The integrated filter element nullifies the principle ESL characteristic, making the effects of the secondary resonances more pronounced. Nevertheless, a tremendous improvement in filtration performance is obtained at high frequencies, exceeding 30 dB (a factor of 30) for frequencies above 7 MHz.

#### E. Integrated Filter Element (Electrolytic)

An integrated filter element based on a 2200  $\mu$ F electrolytic capacitor (United Chemi-Con U767D, 2200  $\mu$ F, 35 V) was also evaluated. Such capacitors are widely used in filters for automotive applications. The center-tapped cancellation winding was wound 0.25" from the top of the capacitor body with 0.5" wide 1 mil thick copper tape, using 1 mil thick mylar tape for insulation. A 3.25 turn winding was placed on the capacitor body and tapped, followed by a continued 3.125 turn winding. The test board setup was similar to that described above.

Test results using the experimental setup of Fig. 13 are shown in Fig. 19. The impedance of the capacitor alone begins to rise in the vicinity of 100 kHz due to ESL effects. By contrast, the integrated filter element continues to attenuate the input out to much higher frequencies, resulting in more than a 10 dB improvement at 200 kHz, and increasing to more than 20 dB above 1 MHz.

#### F. Application to a Power Converter

To evaluate the proposed approach under realistic operating conditions, a further integrated filter element was developed and employed as the main element in the input filter of a buck converter. This prototype filter element was again based on a United Chemi-Con U767D series 2200  $\mu$ F 35 V capacitor, but in this case an end-tapped winding configuration was used. The shunt-path winding was implemented as 1.75 turns (on the capacitor body) of 1" wide, 1 mil thick copper foil insulated with 1 mil thick mylar tape. The series-path winding was formed using several turns of 18-gauge magnet wire coiled tightly over the shunt-path winding and glued in place. An end-point of the series path winding yielding good inductance cancellation was found empirically. The resulting prototype filter element reduced the effective

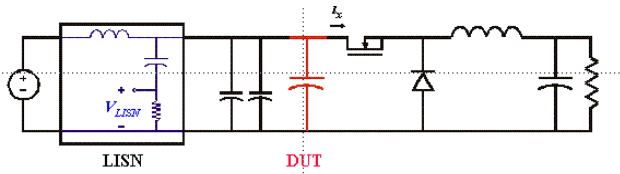


Fig. 20. The test setup used to measure the conducted EMI performance of the integrated filter element.

shunt-path inductance by approximately a factor of five as compared to a capacitor alone, while providing additional series filter-path inductance.

The conducted EMI performance of the integrated filter element was measured using the test setup of Fig. 20. The prototype element was employed as the main input filter element for a buck converter. As is typical in input filter applications, a pair of small ceramic capacitors (22  $\mu$ F, United Chemi-Con TCD 51E1E226M) was placed in parallel with the DUT. Ripple attenuation performance was measured using standard EMI test measurements in an A-B comparison between the prototype filter element and a capacitor. The dc/dc converter was operated at a switching frequency of 100 kHz with approximately 50% duty ratio and a 10 A dc output current. The Line Impedance Stabilization Network (LISN) voltage was measured with a spectrum analyzer via a 20 dB attenuator.

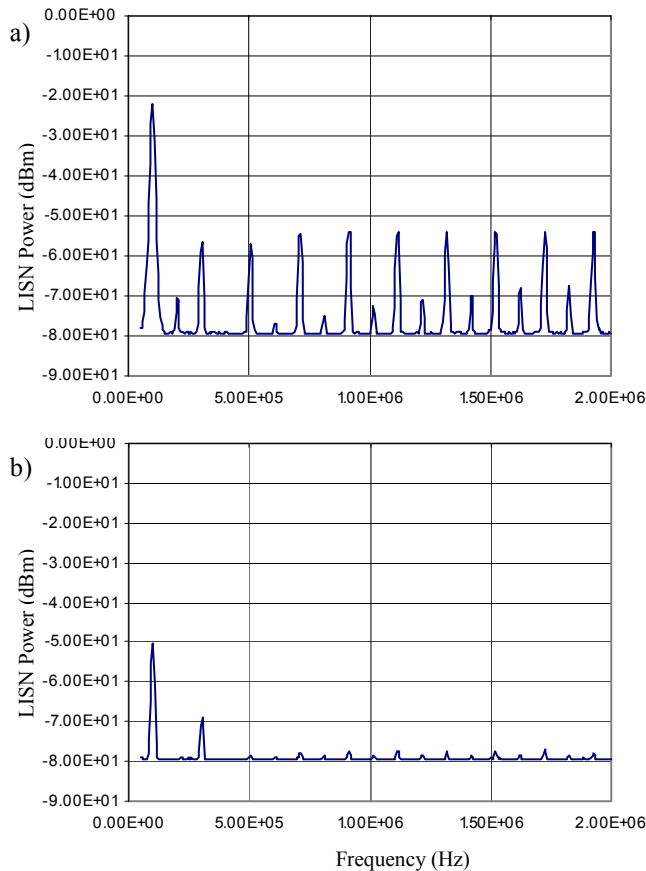


Fig. 21. LISN power spectra for the case of (a) the capacitor alone and (b) the integrated filter element. The converter was operated at 50% duty cycle at 10 A DC output current.

The relative performance of the prototype filter element and a capacitor alone is illustrated in Fig. 21. As can be seen,

the attenuation of the prototype filter element exceeds that of the capacitor alone by over 25 dB (a factor of 17) across the measured spectrum (100 kHz to 2 MHz). This represents a large improvement in filtration capability without a significant increase in component volume. Furthermore, substantial additional improvements may be expected in such applications as design techniques for integrated filter elements are refined.

## V. CONCLUSION

Electrical filters are important for attenuating electrical ripple, eliminating electromagnetic interference (EMI) and susceptibility, improving power quality, and minimizing electromagnetic signature. Capacitors are critical elements in such filters, and filter performance is strongly influenced by the capacitor parasitics. This paper introduces a new design technique that overcomes the capacitor parasitic inductance that limits filter performance at high frequencies. This new technique is based on the application of coupled magnetic windings to effectively cancel capacitor parasitic inductance, while introducing inductance in filter branches where it is desired. After treating the underlying basis of the technique, the paper addresses its application to the design of both discrete filters and novel integrated LC filter components. Numerous experimental results are provided that demonstrate the high performance of the approach in both discrete filters and integrated filter components across a wide variety of capacitor sizes and types.

## ACKNOWLEDGEMENT

The authors gratefully acknowledge the support for this work provided by the United States Office of Naval Research under ONR grants N00014-00-1-0381 and N00014-02-1-0481.

## REFERENCES

- [1] T.K. Phelps and W.S. Tate, "Optimizing Passive Input Filter Design," *Proc. of the 6<sup>th</sup> National Solid-State Power Conversion Conf.*, May 1979, pp. G1-1 – G1-10.
- [2] M.J. Nave, *Power Line Filter Design for Switched-Mode Power Supplies*, New York: Van Nostrand Reinhold, 1991.
- [3] P.T. Krein, *Elements of Power Electronics*, New York: Oxford University Press, 1998, pp. 381-392.
- [4] G.B. Crouse, "Electrical Filter," U.S. Patent No. 1,920,948, Aug. 1, 1933.
- [5] D.C. Hamill and P.T. Krein, "A 'Zero' Ripple Technique Applicable to Any DC Converter," *1999 IEEE Power Electronics Specialists Conference*, June 1999, pp. 1165-1171.
- [6] S. Feng, W.A. Sander, and T.G. Wilson, "Small-Capacitance Nondissipative Ripple Filters for DC Supplies," *IEEE Trans. Mag.*, Vol. 6, No. 1, March 1970, pp. 137-142.
- [7] R.P. Severns and G.E. Bloom, *Modern DC-to-DC Switchmode Power Converter Circuits*, New York: Van Nostrand Reinhold, 1985.
- [8] J.W. Kolar, H. Sree, N. Mohan, and F.C. Zach, "Novel Aspects of an Application of 'Zero'-Ripple Techniques to Basic Converter Topologies," *1997 IEEE Power Electronics Specialists Conference*, June 1997, pp. 796-803.
- [9] G.E. Bloom and R. Severns, "The Generalized Use of Integrated Magnetics and Zero-Ripple Techniques in Switchmode Power Converters," *1984 IEEE Power Electronics Specialists Conference*, 1984, pp. 15-33.



- [10] S. Senini and P.J. Wolfs, "The Coupled Inductor Filter: Analysis and Design for AC Systems," *IEEE Trans. Indust. Elect.*, Vol. 45, No. 4, Aug. 1998, pp. 574-578.
- [11] J.W. Phinney, "Filters with Active Tuning for Power Applications," S.M. Thesis, Massachusetts Institute of Technology, Department of Electrical Engineering and Computer Science, May 2001.
- [12] J.W. Phinney and D.J. Perreault, "Filters with Active Tuning for Power Applications," *2001 IEEE Power Electronics Specialists Conference*, June 2001, pp. 363-370.
- [13] D.L. Logue and P.T. Krein, "Optimization of Power Electronic Systems Using Ripple Correlation Control: A Dynamic Programming Approach," *2001 IEEE Power Electronics Specialists Conference*, June 2001, pp. 459-464.
- [14] R. Hertz and H. Buelteman, "The Application of Perpendicularly Superposed Magnetic Fields," *AIEE Transactions*, Part I, Vol. 74, Nov. 1955, pp. 655-660.
- [15] N. Saleh, "Variable Microelectronic Inductors," *IEEE Trans. Comp. Hybrid, and Mfg. Tech.*, Vol. CHMT-1, No. 1, March 1978, pp. 118-124.
- [16] H.J. McCreary, "The Magnetic Cross Valve," *AIEE Transactions*, Part II, Vol. 70, 1951, pp. 1868-1875.
- [17] F.J. Beck and J.M. Kelly, "Magnetization in Perpendicularly Superposed Direct and Alternating Fields," *Journal of Applied Physics*, Vol. 19, June 1948, pp. 551-562.
- [18] A. Kamon, L.M. Silveira, C. Smithhisler, and J. White, *FastHenry USER'S GUIDE*, Cambridge: MIT, 1996
- [19] R. Reeves, "Choke-Capacitor Hybrid as a Fluorescent Lamp Ballast," *Proc. IEE*, Vol. 122, No. 10, Oct 1975, pp. 1151-1152.
- [20] R. Reeves, "Inductor-Capacitor Hybrid," *Proc. IEE*, Vol. 122, No. 11, Nov. 1975, pp. 1323-1326.
- [21] P.N. Murgatroyd and N.J. Walker, "Lumped-Circuit Model for Inductor-Capacitor Hybrid," *Electronics Letters*, Vol. 12, No. 1, pp. 2-3.
- [22] R.J. Kemp, P.N. Murgatroyd, and N.J. Walker, "Self Resonance in Foil Inductors," *Electronics Letters*, Vol. 11, No. 15, pp. 337-338.
- [23] M. Ehsani, O.H. Stielau, J.D. van Wyk, and I.J. Pitel, "Integrated Reactive Components in Power Electronic Circuits," *IEEE Trans. Power Electron.*, Vol. 8, No. 2, April 1993, pp. 208-215.
- [24] M. Ehsani, P. Le Polles, M.S. Arefeen, I.J. Pitel, and J.D. Van Wyk, "Computer-Aided Design and Application of Integrated LC Filters," *IEEE Trans. Power Electron.*, Vol. 11, No. 1, Jan. 1996, pp. 182-190.
- [25] I.W. Hofsajer, J.A. Ferreira, and J.D. van Wyk, "Design and Analysis of Planar Integrated L-C-T Components for Converters," *IEEE Trans. Power Electron.*, Vol. 15, No. 6, Nov. 2000, pp. 1221-1227.
- [26] F. Wilmot, E. Labouré, F. Costa, S. Faucher, C. Joubert, and F. Forest, "Design, Optimization and Electromagnetic Modeling of Integrated Passive Components for Power Electronic," *2001 IEEE Power Electronics Specialists Conference*, June 2001, pp. 1932-1937.
- [27] L. Zhao, J.T. Strydom, and J.D. Van Wyk, "An Integrated Resonant Module for a High-Power Soft-Switching Converter," *2001 IEEE Power Electronics Specialists Conference*, June 2001, pp. 1944-1948.
- [28] K. Laouamri, J.C. Crebier, J-P Ferrieux, and T. Chevalier, "Construction and Modeling of Integrated LCT Structure for PFC Resonant Converter," *2001 IEEE Power Electronics Specialists Conference*, June 2001, pp. 1949-1954.
- [29] J.C. Crebier, T. Chevalier, K. Laouamri, and J.P. Ferrieux, "Study and Analysis of Wounded Integrated L-C Passive Components," *2001 IEEE Power Electronics Specialists Conference*, June 2001, pp. 2137-2142.