



RLE

undercurrents

Volume 5, Number 2 • Spring 1992

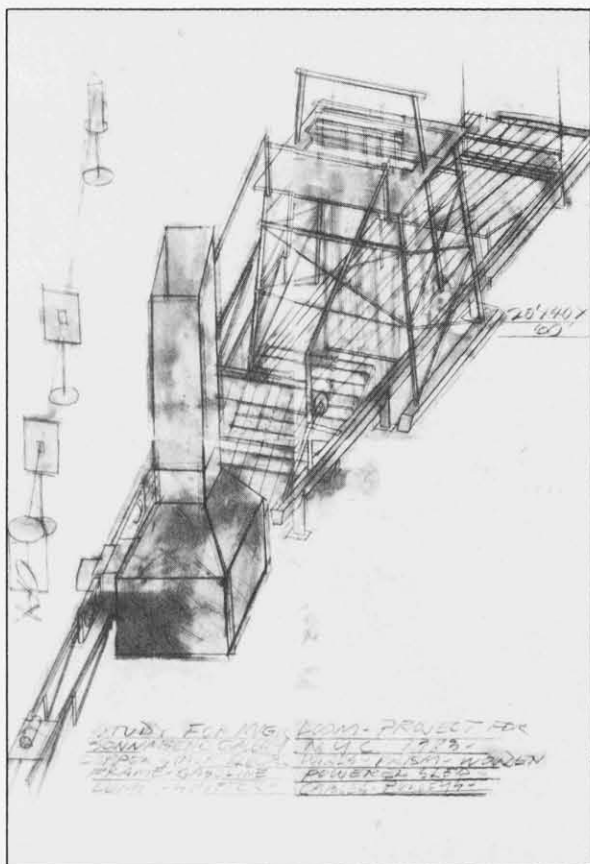
A Newsletter for the RLE Community at MIT

aRtLE

When Building 36 was completed in 1973, MIT's One Percent for Art policy channeled building funds toward the acquisition of original art for the building's public areas. The result today is that RLE has several distinguished works of art gracing our laboratory's open areas and conference rooms. In upcoming issues, *undercurrents* will highlight these works. We begin with our most recent acquisition, *Study for Magic Loom*, which is displayed in the fifth floor lobby.

Created by Dennis Oppenheim in 1983, *Study for Magic Loom* is a one-of-a-kind drawing that incorporates the media of pencil, oil wash, and oil pastel on four sheets of paper. It measures 100x76 inches and robustly fills the space previously occupied by the stolen (and deeply missed) Fernand Leger rug. Dennis Oppenheim is a conceptual artist who was born in Electric City, Washington, in 1938. In keeping with the tradition of conceptual art, his drawing illustrates a concept that is not realized (a magic loom machine), and does so here with a sense of humor. An inscription on the lower center of the drawing refers to a copper stack, electric wires, a gasoline-powered sled, and pulleys, among other components of this fanciful Rube Goldberg-like apparatus.

The MIT List Visual Arts Center accepted *Study for Magic Loom* as a gift in 1991, largely because Jill Aszling, the Center's Fine Arts Registrar, knew that the empty wall space in the fifth floor lobby could accommodate the drawing's oversized proportions. Jill also intuited, correctly, that the subject matter would have a receptive audience in RLE. When shown the work, RLE Administrative Officer Donna Ticchi was enthusiastic, "We build things in RLE, after all. RLE is a straightforward place, but I knew that the humor in this piece would be appreciated here. For me, the magic loom machine conveys a spirit of energy and inventiveness that is part of our laboratory."



Study for Magic Loom by David Oppenheim



Administrative Assistant Susan E. Nelson finds her busy position interesting and enjoys the varied nature of her work in RLE's Circuit and Systems Group. (Photo by John F. Cook)

IN HARMONY AT RLE'S CIRCUITS AND SYSTEMS GROUP

Administrative Assistant **Susan E. Nelson** recently celebrated her ninth anniversary with RLE. Susan came to RLE on May 2, 1983, as Senior Staff Assistant for Professors John L. Wyatt, Jr., Campbell L. Searle, Bruce R. Musicus, and Francis F. Lee. Today, Susan works for Professors Wyatt, Jacob K. White, and Srinivas Devadas in RLE's Circuits and Systems Group, providing secretarial support and serving as the contact person for the group's twenty students.

A native and lifelong resident of Holbrook, Massachusetts, Susan has two children, six-year-old James David and twenty-one-month-old Ethan George. An opera buff, Susan was ecstatic when she, her mother, and a friend met opera star Placido Domingo after a performance at New York City's Metropolitan Opera. Susan's favorite opera is *Tosca*, and her son Ethan loves to sing

along, especially when Luciano Pavarotti sings. Her other interests include playing the piano, cooking, reading, gardening, and cheering for James at his soccer and t-ball games. Susan also enjoys traveling and has visited Scotland, England, and Aruba.

This September, Susan will celebrate her marriage to Robert Chafe in a ceremony that will take place in the backyard of her Holbrook home. Bob is a friend's older brother with whom Susan began corresponding while he served in the Persian Gulf last year. A sergeant in the National Guard 1058 Transportation Division, Bob was responsible for transporting troops, ammunition, mail, and other materials through unmapped desert. Susan, Bob, James, and Ethan will continue to reside in Holbrook.

SHORT WAVES

Nina Camilla Lauritzen was born on December 8, 1991, to **Lisbeth Lauritzen**, Administrative Assistant in the Optics and Devices Group. The proud father is Bent Lauritzen, a postdoc in the Laboratory for Nuclear Science.

Marco and Giulia Nassi welcomed the arrival of their son, Andrea Giovanni, at Mt. Auburn Hospital on January 10, 1992. Andrea was more than five weeks early (5 pounds, 3 ounces), and after getting some TLC at Massachusetts General Hospital, he came home to mom, dad, and sister Beatrice. Mom and dad are both visiting scientists in RLE, Giulia with the Speech Communication Group, and Marco with the Plasma Physics Group.

Congratulations to RLE Personnel Officer **Ramona B. Allen** and husband Cyril on the birth of their daughter, Mya, on February 13, 1992, at Brigham and Women's Hospital in Boston.

In December 1991, Research Specialist **Giovanni Aliberti** of the Digital Signal Processing Group was married to Darlette Simoes in a ceremony performed by the bride's father in Brazil. The couple is residing in Quincy, Massachusetts.

Works by Senior Technical Illustrator **Robert H. Priest** were part of a show by four new artists at the Akin Gallery in Boston. The show, which ran through March 3rd, was reviewed in *The Boston Globe* (February 27, 1992): "Robert Priest juxtaposes illustrational, linear drawings atop luxuriously painted grounds, implying an intimate relationship between disparate modes."

Thomas R. Westcott ('93), a participant in the Undergraduate Research Opportunities Program (UROP), taught a class in American Sign Language during the Independent Activities Period. Tom's many activities to promote interaction with

continued on pg. 2

Back by Popular Demand

A fresh supply of RLE coffee mugs is now available. Newcomers to RLE can pick up their free mugs when they sign in at the Headquarters' front desk (36-413). Extra mugs can also be purchased in the Document Room (36-412) for \$4.00 each. Personal checks and MIT account numbers will be accepted.

Waves from pg. 1

the hearing impaired were featured in *Tech Talk* (February 12, 1992). His UROP project in RLE's Sensory Communication Group involves hearing aid research. Tom has also teamed up with **Corine A. Bickley**, a Visiting Scientist in the Speech Communication Group, to teach a sign language seminar that also addresses cultural issues associated with the hearing impaired.

Professors **Daniel Kleppner** and **David E. Pritchard** were inducted into MIT's Quarter Century Club on March 24, 1992. Professor Kleppner is RLE's Associate Director, and both he and Professor Pritchard are affiliated with the MIT Physics Department and RLE's Atomic, Molecular, and Optical Physics Group.

Administrative Officer **Donna Maria Ticchi** has been appointed to MIT's Administrative Advisory Committee. The committee was formed in 1987 by MIT's administrative vice presidents. It serves as a liaison with the MIT community to provide a forum to exchange information and ideas on administrative matters.

Facilities and Safety Officer **Gerrard F. Power** received a Citizen Recognition Award from the MIT Campus Police on May 7, 1992, in appreciation of his outstanding assistance and community service.

IN MEMORIAM



Esther D. Grande of Hyde Park, 77, died suddenly on February 13, 1992. In 1958, Esther joined RLE as a Technical Typist and was promoted to Editorial Assistant in the lab's Publications Office. She retired from RLE in 1982. Esther is remembered for her generous efforts to help the needy. For many years, she was a volunteer tax consultant for the American Association of Retired Persons in Hyde Park. She is survived by her son, Millard De Voll, and brother, George Dahlberg.

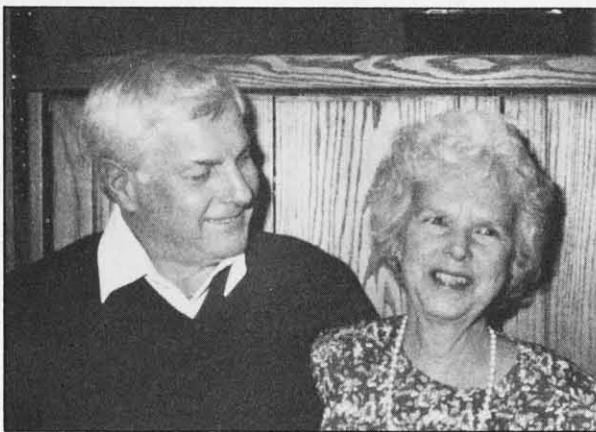
Donald S. "Ducky" Thibodeau, 71, died March 11, 1992. He served RLE as a Utility Driver and Technician from 1964 through 1976. He transferred to the Francis Bitter National Magnet Laboratory in 1976 and retired from MIT in 1985. Funeral services were held on March 14th at Mt. Auburn Cemetery. He is survived by four sons, Donald S., Jr., Richard, Steven, and William Thibodeau, and ten grandchildren. (1964 file photo)

Community Service Fund



Publications Assistant Mary Greene is RLE's solicitor for the Community Service Fund (CSF) this year. The CSF seeks to strengthen mutual understanding and cooperation between MIT and the Cambridge community by providing financial assistance to support MIT people in their voluntary activities in the community. Last year, the fund raised \$57,000. Please take this opportunity to help those who help others and respond to Mary's request with your generous contribution.

COMINGS AND GOINGS



After fifteen years at MIT (thirteen with RLE), Maintenance Mechanic **Edward R. Laval** and wife Abbie celebrate on the occasion of Ed's retirement. The couple plans to travel across the U.S. and visit several national parks, including a return trip to Alaska.



Part-time Senior Staff Assistant **Kerry L. Gafney** joined the Plasma Physics Group on March 9, 1992, working for Professor Bruno Coppi. A native of Patchogue, New York, Kerry attended the State University of New York at Potsdam and then transferred as an exchange student to the University of Hawaii at Oahu. After earning a bachelor's degree in Asian and Pacific Island History in December 1990, Kerry worked at Oahu's Mission House Museum (where James Michener researched his novel, *Hawaii*) and moved to Boston in November 1991. She enjoys swimming, reading and sight-seeing, and hopes to continue her education in history. (Photo by John F. Cook)



When the moon hits your eye like a big pizza pie, then it must be time for the RLE Secretaries Day Luncheon! RLE's Support Staff gathered for their annual pizza luncheon on April 22nd to celebrate Professional Secretaries Week. From left: Administrative Assistant Dorothy Fleischer, Administrative Secretary Nora Luongo, and Administrative Assistant Cindy LeBlanc. (Photo by John F. Cook)



Friends and family celebrate at the 1991 RLE Holiday Party last December. On the left, Research Specialist Jimmy Carter, Facilities Officer Gerry Power, Senior Staff Assistant Janice Balzer, Sponsored Research Technical Staff Ed Fitzgerald, and former RLE'er Harry Gay share the holiday spirit. On the right, it's a family affair as Principal Research Scientists Charlotte Reed and Pat Zurek (mom and dad) dive into a five-foot-long sub sandwich with son John. (Photos by Dave Foss)

In January, the Plasma Fusion Group said goodbye to **Edward W. Fitzgerald, Jr.**, a thirty-one-year veteran of the group. Ed, a member of RLE's Sponsored Research Technical Staff, has worked on the Versator project since it began in 1976. Now that the Versator project is finished, Ed has joined the staff at MIT's Plasma Fusion Center.



From left: Professors Miklos Porkolab and Bruno Coppi, Ed, and Professor George Bekefi with a picture of the Versator reactor. (Photo by John F. Cook)

RLE undercurrents

undercurrents is a publication of the Research Laboratory of Electronics for the RLE community at MIT. The following individuals contributed their time and energy to this issue: John F. Cook, Dorothy A. Fleischer, Robert H. Priest, Barbara Passero, David W. Foss, and Donna Maria Ticchi.

Inquiries may be addressed to:

RLE undercurrents
Research Laboratory of Electronics (36-412)
Massachusetts Institute of Technology
77 Massachusetts Avenue
Cambridge, MA 02139-4307

undercurrents is printed on recycled paper.



Take a Bite Out of Crime. Patrol Officer Paul J. Baratta and Sergeant Cheryl Vossmer of MIT Campus Police offered crime prevention tips to the RLE community last January. Sergeant Vossmer discussed a variety of scenarios and stressed that one of the best ways to prevent crime is to be aware of your surroundings at all times. If you would like more information on crime prevention, contact the Crime Prevention Unit of the MIT Campus Police (x3-2996). (Photo by John F. Cook)

